

## 2016 - Jólaroynd - Støddfrøði 8 - Fimisrokning

### Roknireglur

**1.**

$$1569 + 656 = \boxed{\phantom{0000}}$$

**2.**

$$1500 - 736 = \boxed{\phantom{0000}}$$

**3.**

$$45 \cdot 36 = \boxed{\phantom{0000}}$$

**4.**

$$756 : 7 = \boxed{\phantom{0000}}$$

**5.**

$$65,68 + 65,68 = \boxed{\phantom{0000}}$$

**6.**

$$56,9 - 7,36 = \boxed{\phantom{0000}}$$

**7.**

$$9,6 \cdot 6,3 = \boxed{\phantom{0000}}$$

**8.**

$$87 - 7 \cdot 11 = \boxed{\phantom{0000}}$$

**9.**

$$40 : 0,4 = \boxed{\phantom{0000}}$$

## Umrokna

**10.**

$$400 \text{ min} = \boxed{\phantom{00}} \text{ tímar } \boxed{\phantom{00}} \text{ min}$$

**12.**

$$8,6 \text{ tímar} = \boxed{\phantom{00}} \text{ tímar } \boxed{\phantom{00}} \text{ min}$$

**14.**

$$6 \text{ m } 45 \text{ cm} = \boxed{\phantom{00}} \text{ cm}$$

**16.**

$$5000 \text{ dm}^2 = \boxed{\phantom{00}} \text{ m}^2$$

**18.**

$$2,04 \text{ kg} = \boxed{\phantom{00}} \text{ g}$$

**11.**

$$12 \text{ km } 451 \text{ m} = \boxed{\phantom{00}} \text{ km}$$

**13.**

$$3 \text{ l } 5 \text{ dl} = \boxed{\phantom{00}} \text{ dl}$$

**15.**

$$645 \text{ g} = \boxed{\phantom{00}} \text{ kg}$$

**17.**

$$14,5 \text{ m}^3 = \boxed{\phantom{00}} \text{ dm}^3$$

## Líkningar og framsøgn

**19.**

$$5x + 8 = 18$$

$$x = \boxed{\phantom{000}}$$

**20.**

$$5x + 7 = 2x - 5$$

$$x = \boxed{\phantom{000}}$$

**21.**

$$4a - (3a - b) - b = \boxed{\phantom{000}}$$

## Desimaltöl, brot og prosent

Skriva brotini við skákstriku t.d.  $1/2$

Er tað eitt blandað tal, ger so glopp ímillum heila talið og brotið t.d.  $5\frac{3}{4}$

**22.**

Skriva sum desimaltal:

$$65 \% = \boxed{\phantom{000}}$$

**24.**

Skriva sum prosent:

$$0,86 = \boxed{\phantom{00}} \%$$

**26.**

Ger til óektað brot:

$$7\frac{3}{4} = \boxed{\phantom{000}}$$

**28.**

Stytt:

$$15/24 = \boxed{\phantom{000}}$$

**30.**

Hvussu nógv er?

$$25 \% \text{ av } 480 \text{ kr} = \boxed{\phantom{000}} \text{ kr}$$

**23.**

Skriva sum desimaltal:

$$2/5 = \boxed{\phantom{000}}$$

**25.**

Skriva sum prosent:

$$3/5 = \boxed{\phantom{00}} \%$$

**27.**

Ger til blandað tal:

$$38/4 = \boxed{\phantom{000}}$$

**29.**

Stytt mest møguligt:

$$(9 \cdot 2)/(24 \cdot 3) = \boxed{\phantom{000}}$$

## Brot, runda og potensar

Skriva brotini við skákstriku t.d.  $1/2$

Er tað eitt blandað tal, ger so glopp ímillum heila talið og brotið t.d.  $5\frac{3}{4}$

**31.**

$$5/6 + 4/8 = \boxed{\phantom{000}} \text{ (stytt mest møguligt)}$$

**36.**

$$8 \text{ kg av } 32 \text{ kg} = \boxed{\phantom{000}} \%$$

**32.**

$$4 \cdot 4\frac{3}{8} = \boxed{\phantom{000}}$$

**37.**

$$10 : \sqrt{25} = \boxed{\phantom{000}}$$

**33.**

$$4\frac{1}{4} - 2\frac{3}{4} = \boxed{\phantom{000}}$$

**38.**

$$2^2 \cdot 2^3 \cdot 2^4 = \boxed{\phantom{000}}$$

**34.**

Runda til 2 desimalir:

$$45,288 = \boxed{\phantom{000}}$$

**39.**

$$5/6 \text{ av } 24 \text{ kr} = \boxed{\phantom{000}} \text{ kr.}$$

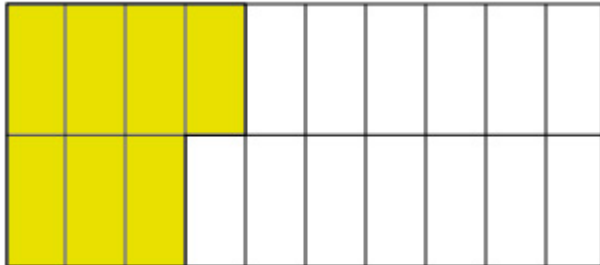
**35.**

105 kg er 35% av einari nøgd.

Øll nøgdin er:  $\boxed{\phantom{000}}$  kg

## Prosent

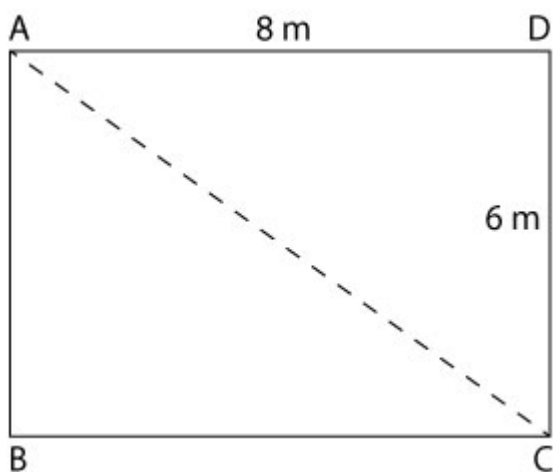
**40.**



Hvussu nógv % av puntunum eru litaðir?

%

## Ummál og hornalinja



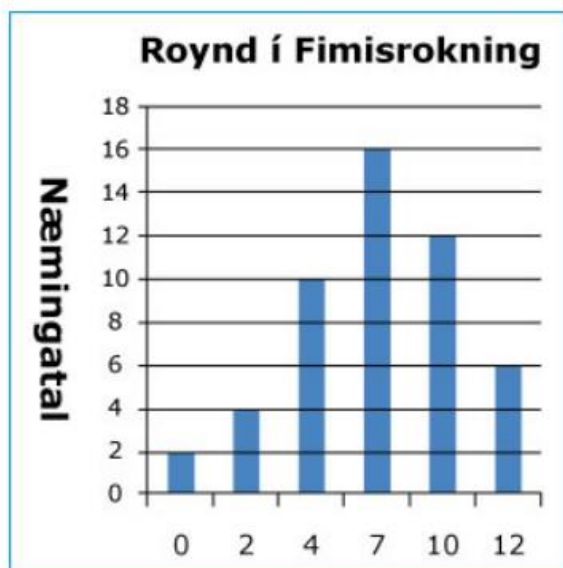
**41.**

Ummálið ABCD er:  m

**42.**

Hornalinjan AC:  m

## Hagfrøði



**43.**

Hvussu nógvir næmingar vóru til royndina?

næm.

**44.**

Hvussu nógv % av næmingunum finga próvtalið 7?

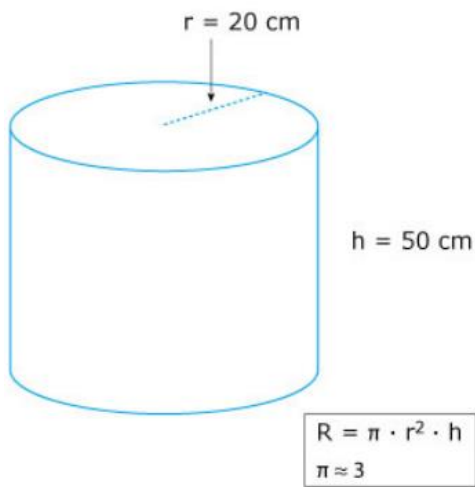
%

**45.**

Hvussu nógv % av næmingunum finga minni enn 7?

%

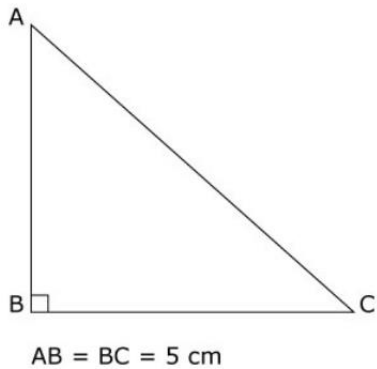
## Rúmd



**46.** Hvussu nógvur litrar tekur sylindarin?

litrar

## Vinklar og vídd



**47.**

Hvussu stórir er vinkul A?

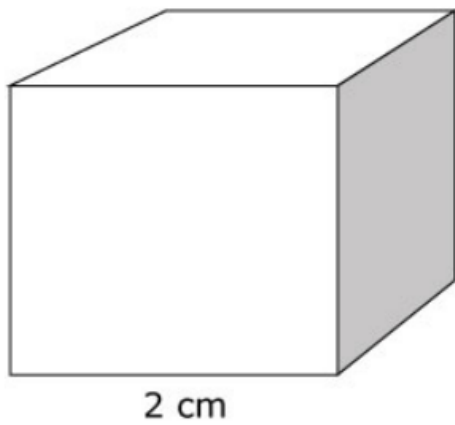
Vinkul A er  stig

**48.**

Víddin á tríkantinum ABC er:   $\text{cm}^2$



## Yvirflata



**49.**

Yvirflatin á terninginum er:  cm<sup>2</sup>

## Töl

**50.**

Skriva töluni, ið vanta í puntarnar:

8	27	64	<input type="text"/>	<input type="text"/>	<input type="text"/>	<input type="text"/>	<input type="text"/>	1000
---	----	----	----------------------	----------------------	----------------------	----------------------	----------------------	------